



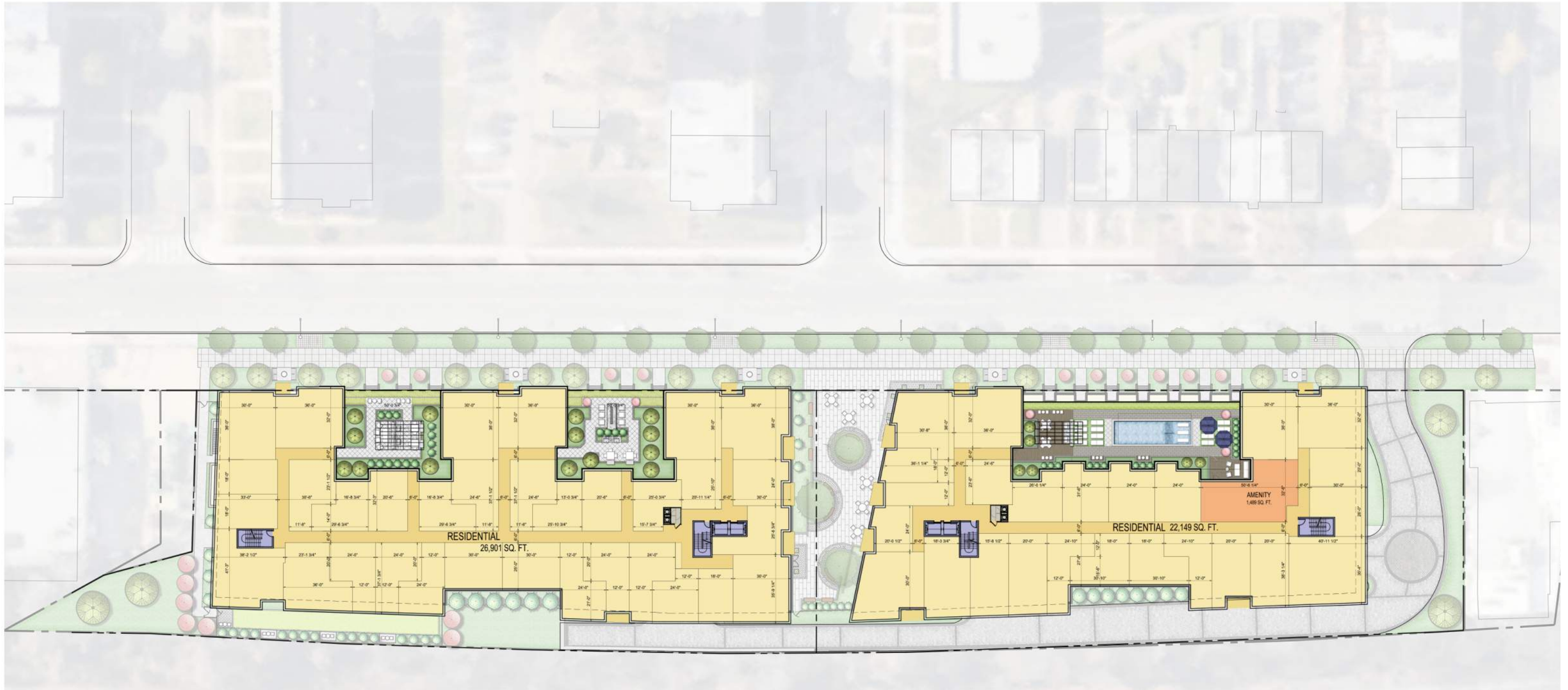
NOTE

The interior layouts shown on the building plans are schematic.
 Changes to the layouts not affecting the exterior envelopes or square footage distribution may occur.
 Courtyard design and layouts are preliminary and are shown for illustrative purposes only.
 Final layouts may vary within the general design parameters shown.



NOTE

The interior layouts shown on the building plans are schematic. Changes to the layouts not affecting the exterior envelopes or square footage distribution may occur. Courtyard design and layouts are preliminary and are shown for illustrative purposes only. Final layouts may vary within the general design parameters shown.



NOTE

The interior layouts shown on the building plans are schematic. Changes to the layouts not affecting the exterior envelopes or square footage distribution may occur. Courtyard design and layouts are preliminary and are shown for illustrative purposes only. Final layouts may vary within the general design parameters shown.



NOTE

The interior layouts shown on the building plans are schematic. Changes to the layouts not affecting the exterior envelopes or square footage distribution may occur. Courtyard design and layouts are preliminary and are shown for illustrative purposes only. Final layouts may vary within the general design parameters shown.

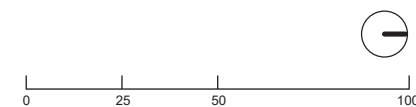


Architecture + Planning
888.456.5849
ktgy.com



HANOVER 8TH STREET
WASHINGTON, DC # 2014-0339

CONSOLIDATED PUD SUBMISSION
APRIL 4, 2019



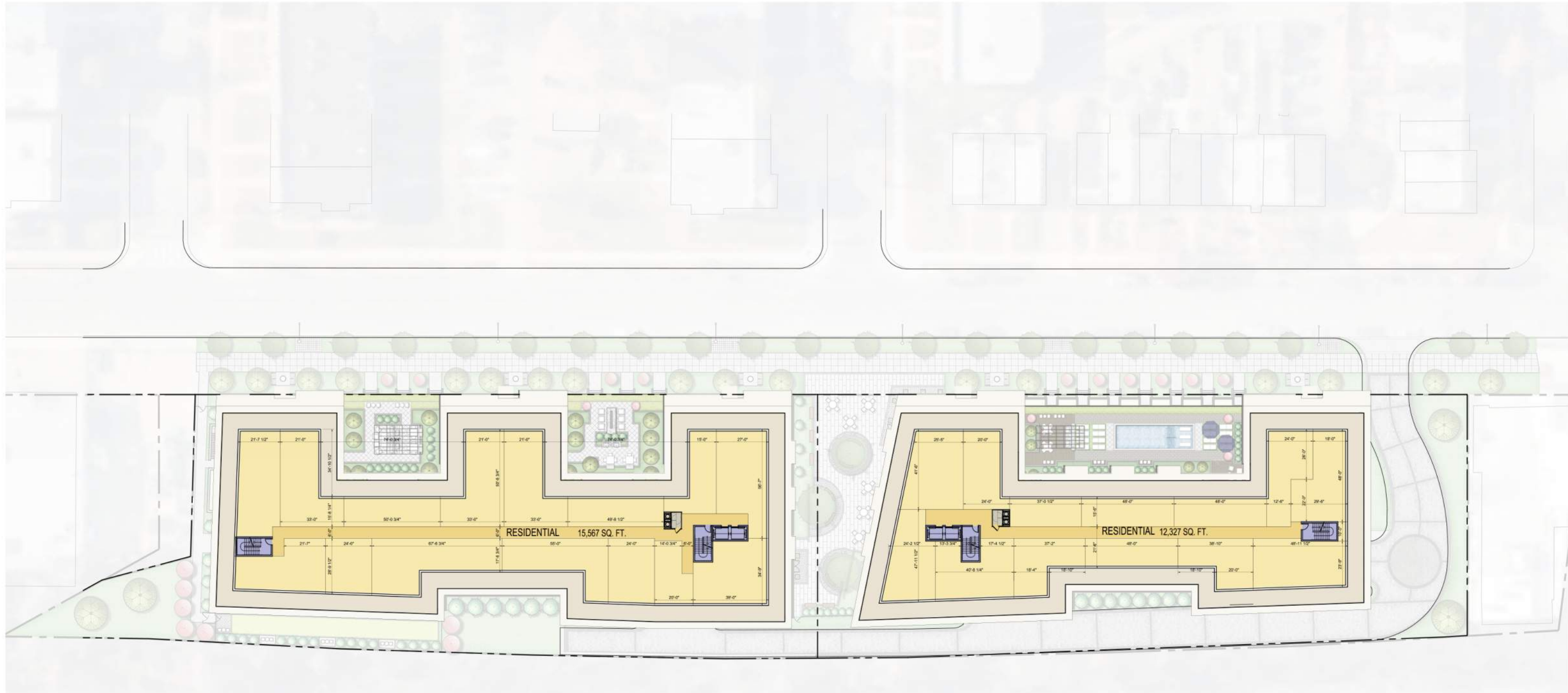
BUILDING PLANS
FOURTH / FIFTH FLOORS

A17



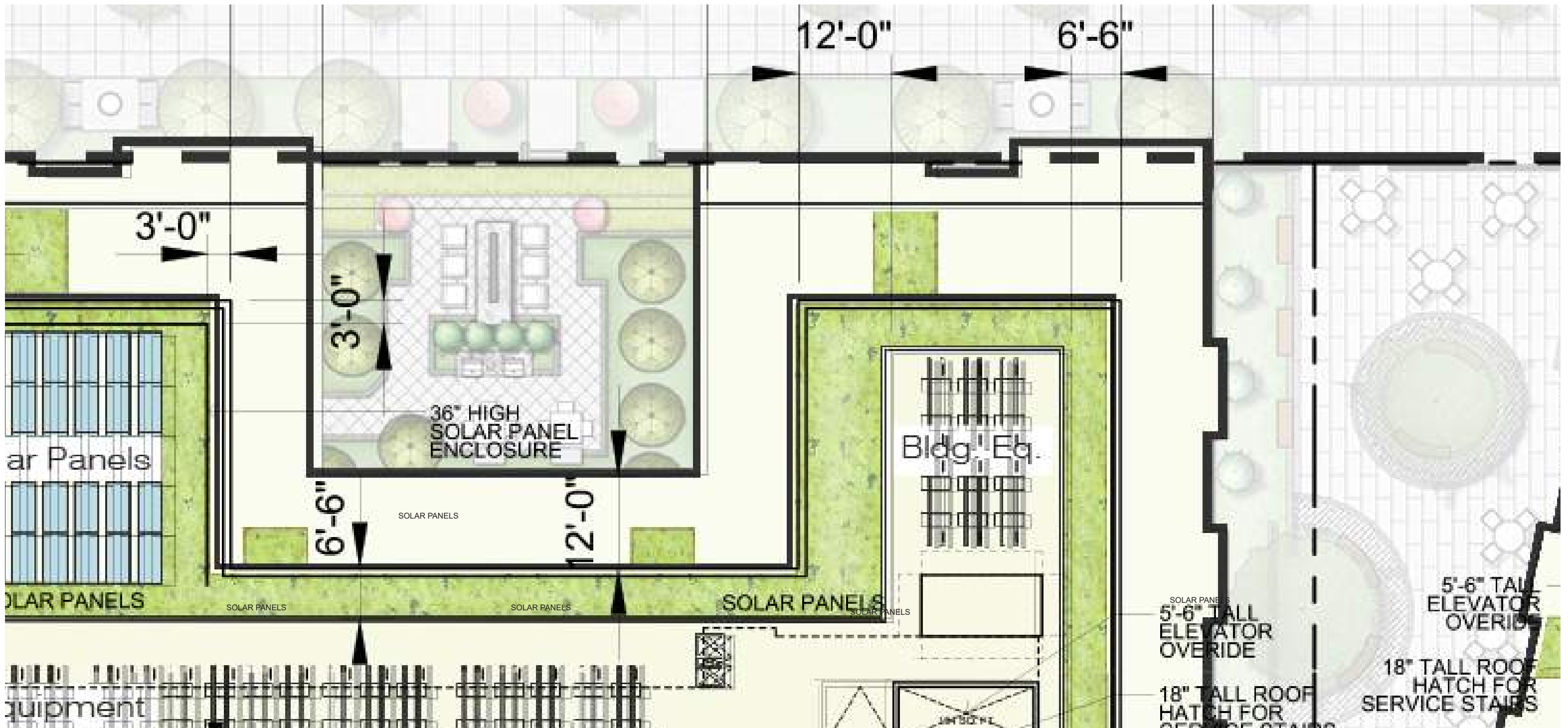
NOTE

The interior layouts shown on the building plans are schematic. Changes to the layouts not affecting the exterior envelopes or square footage distribution may occur. Courtyard design and layouts are preliminary and are shown for illustrative purposes only. Final layouts may vary within the general design parameters shown.



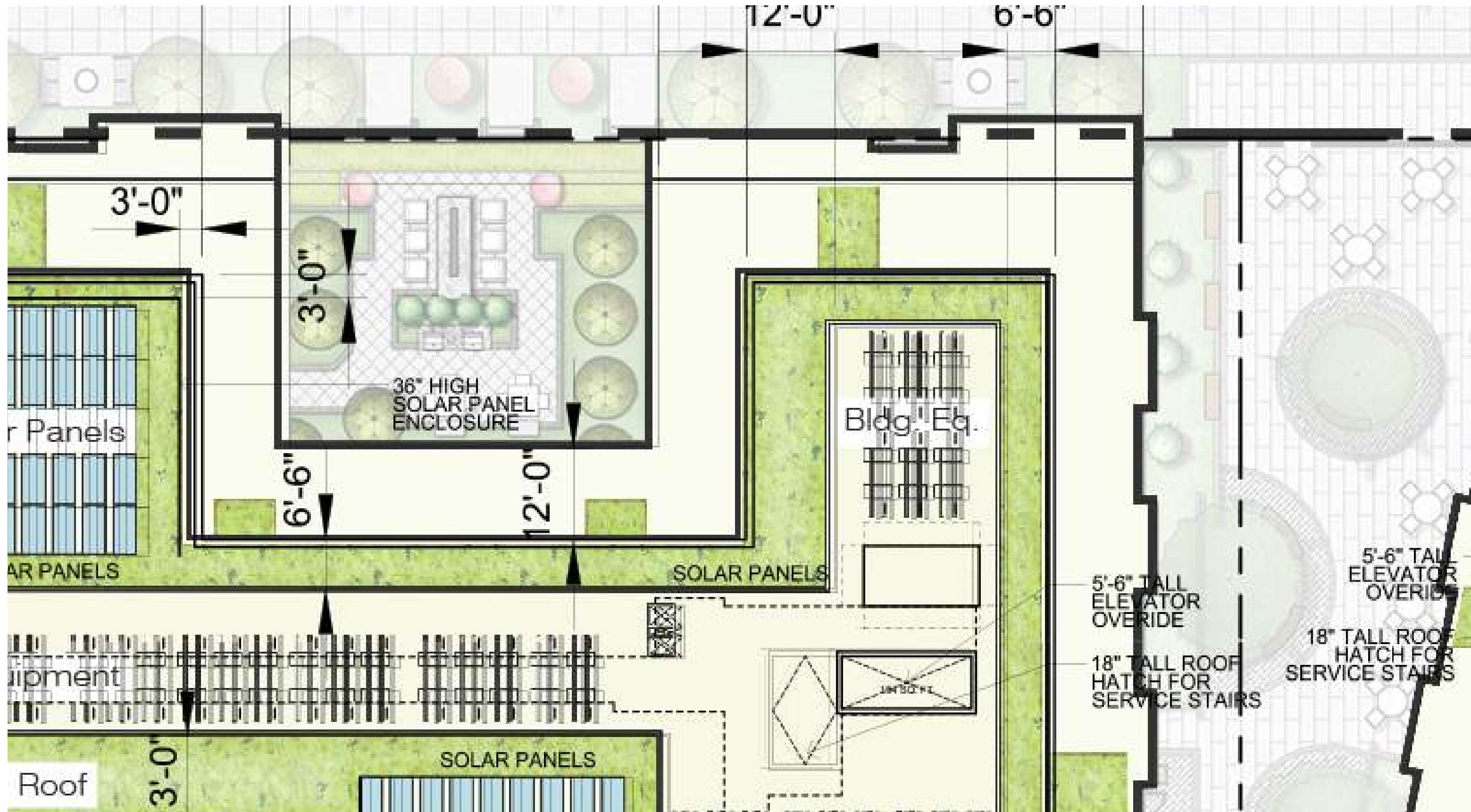
NOTE

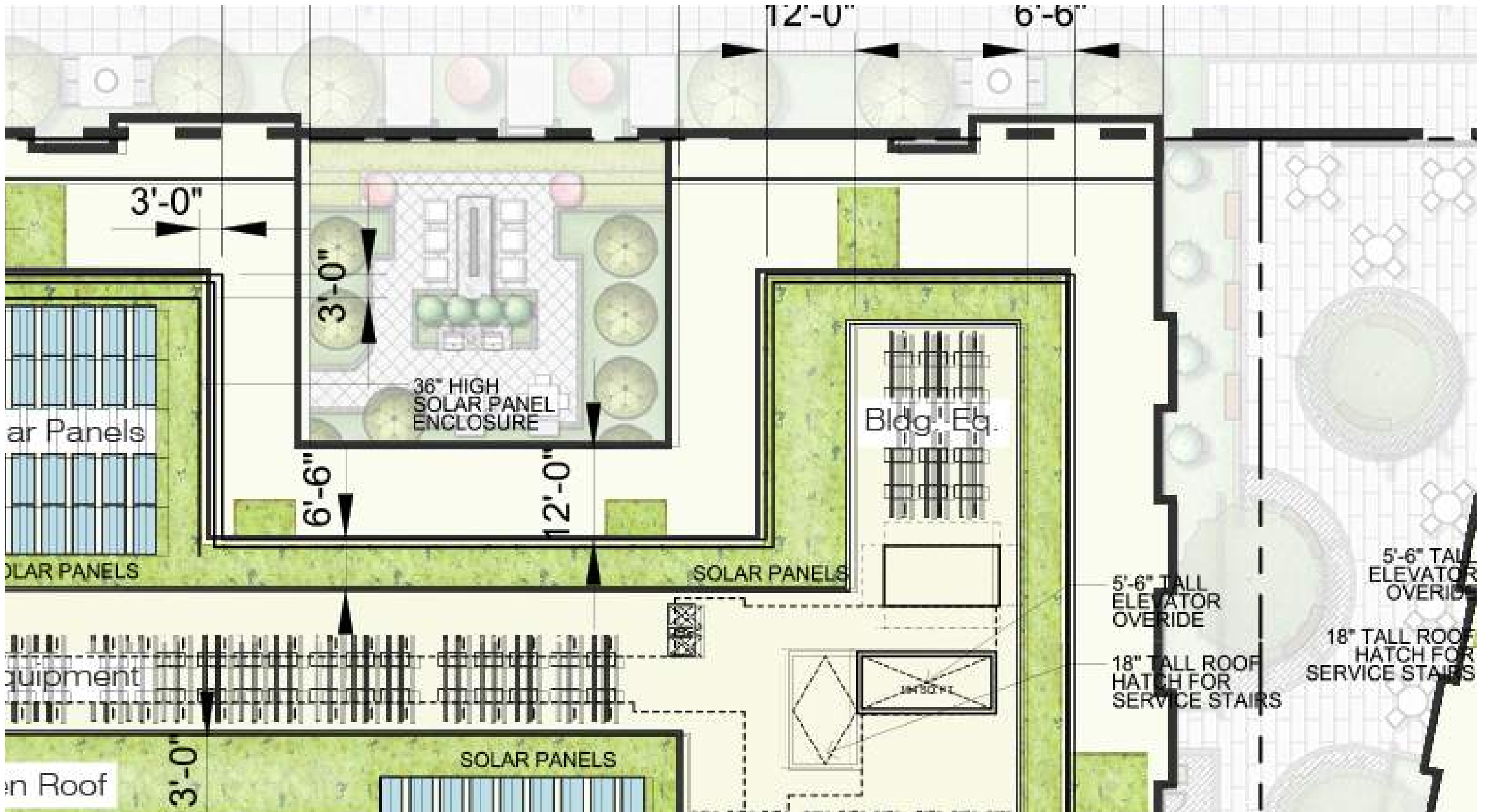
The interior layouts shown on the building plans are schematic. Changes to the layouts not affecting the exterior envelopes or square footage distribution may occur. Courtyard design and layouts are preliminary and are shown for illustrative purposes only. Final layouts may vary within the general design parameters shown.

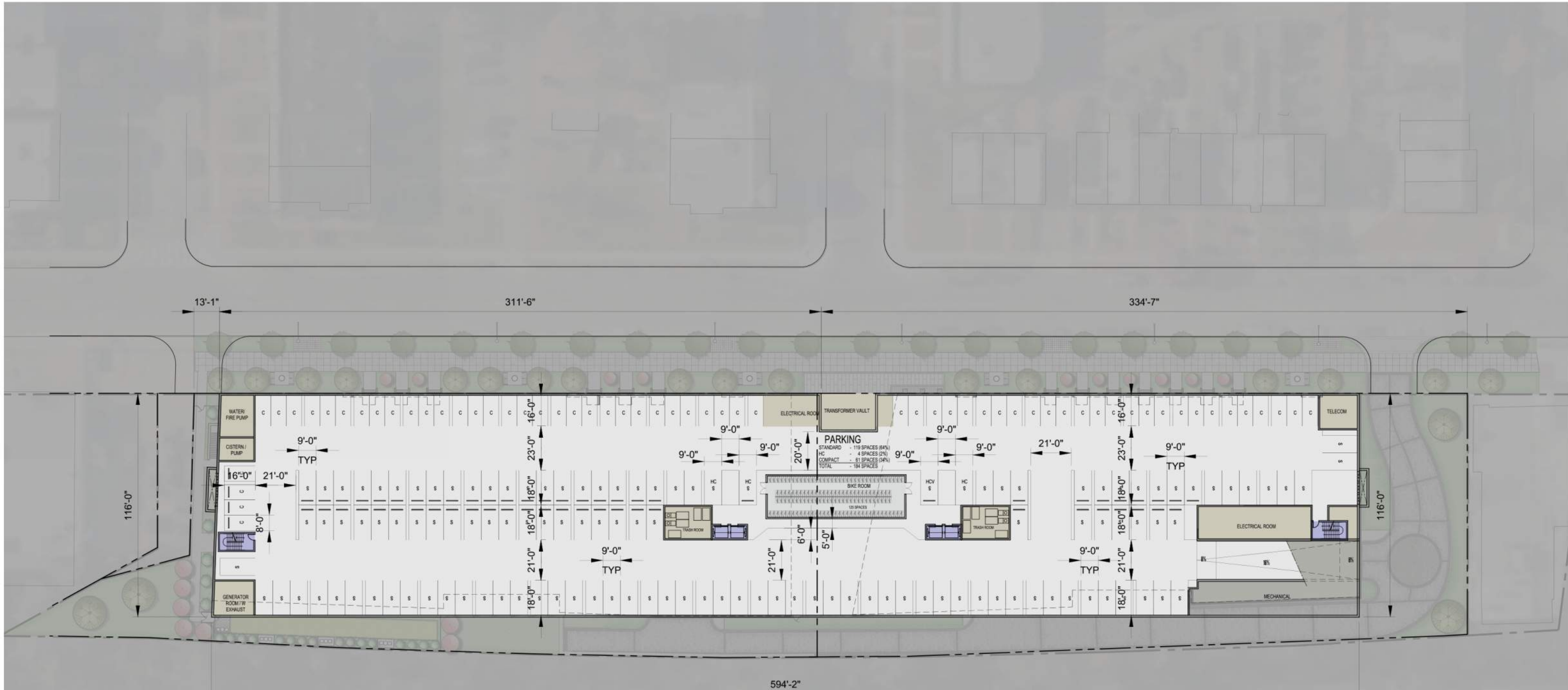


NOTE

The interior layouts shown on the building plans are schematic. Changes to the layouts not affecting the exterior envelopes or square footage distribution may occur. Courtyard design and layouts are preliminary and are shown for illustrative purposes only. Final layouts may vary within the general design parameters shown. Approximately 2750 square feet of solar panels are proposed. The actual location of the solar panels may be revised upon final selection of the solar panel manufacturer and installation guidance.







PARKING	
STANDARD	119
HC	4
COMPACT	61
TOTAL	184 SPACES

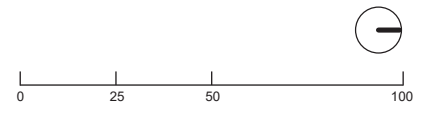


Architecture + Planning
888.456.5849
kitgy.com



HANOVER 8TH STREET
WASHINGTON, DC # 2014-0339

CONSOLIDATED PUD SUBMISSION
APRIL 4, 2019



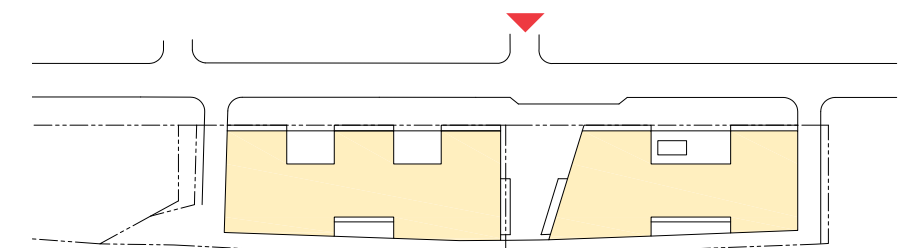
BUILDING PLANS
GARAGE PLAN

A23



MATERIALS LEGEND

- | | | |
|--------------------|-----------------------------|------------------------------|
| 1.1 Masonry #1 | 3.1 Bronze Vinyl windows | 4.1 Metal railing |
| 1.2 Masonry #2 | 3.2 Metal storefront system | 4.2 Metal screen |
| 1.3 Masonry #3 | 3.3 Metal door system | 4.3 Metal canopy |
| 2.1 Stucco #1 | 3.4 Roll up door | 4.4 Wood finish metal accent |
| 2.2 Stucco #2 | | 4.5 Corrugated metal panel |
| 2.3 Stucco #3 | | 5.1 Signage |
| 2.4 Metal Panel #1 | | |



ELEVATIONS
WEST

A24

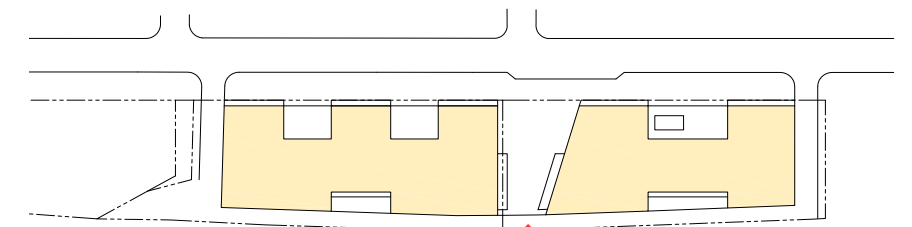


MATERIALS LEGEND

- 1.1 Masonry #1
- 1.2 Masonry #2
- 1.3 Masonry #3
- 2.1 Stucco #1
- 2.2 Stucco #2
- 2.3 Stucco #3
- 2.4 Metal Panel #1

- 3.1 Bronze Vinyl windows
- 3.2 Metal storefront system
- 3.3 Metal door system
- 3.4 Roll up door

- 4.1 Metal railing
- 4.2 Metal screen
- 4.3 Metal canopy
- 4.4 Wood finish metal accent
- 4.5 Corrugated metal panel
- 5.1 Signage



ELEVATIONS
EAST

A25

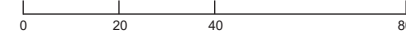


Architecture + Planning
888.456.5849
ktgy.com



HANOVER 8TH STREET
WASHINGTON, DC # 2014-0339

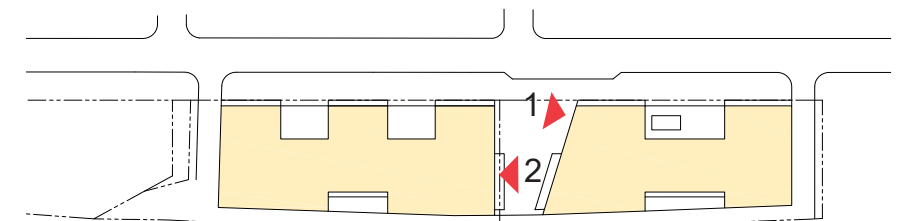
CONSOLIDATED PUD SUBMISSION
APRIL 4, 2019

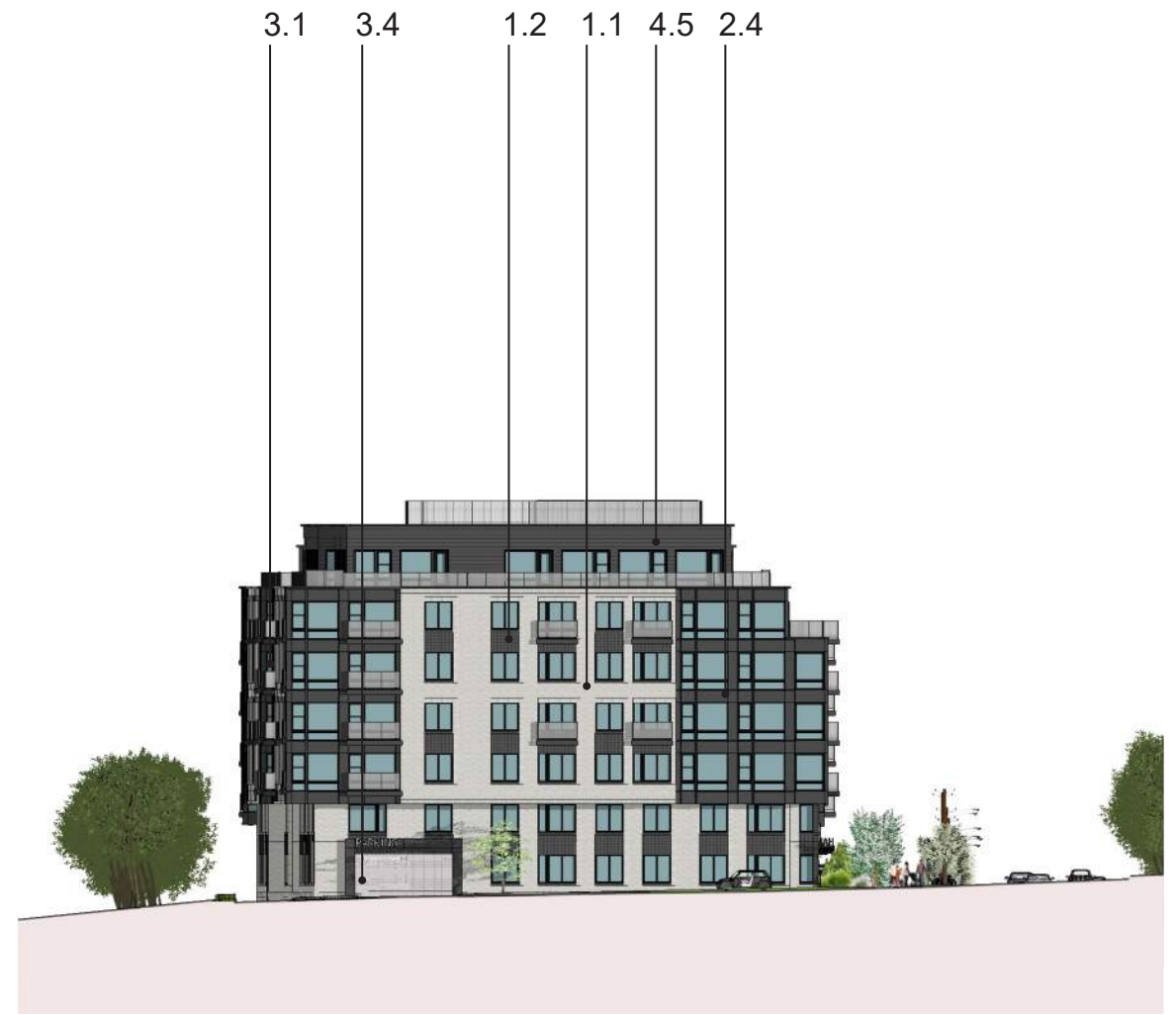




MATERIALS LEGEND

- | | | |
|--------------------|-----------------------------|------------------------------|
| 1.1 Masonry #1 | 3.1 Bronze Vinyl windows | 4.1 Metal railing |
| 1.2 Masonry #2 | 3.2 Metal storefront system | 4.2 Metal screen |
| 1.3 Masonry #3 | 3.3 Metal door system | 4.3 Metal canopy |
| 2.1 Stucco #1 | 3.4 Roll up door | 4.4 Wood finish metal accent |
| 2.2 Stucco #2 | | 4.5 Corrugated metal panel |
| 2.3 Stucco #3 | | 5.1 Signage |
| 2.4 Metal Panel #1 | | |



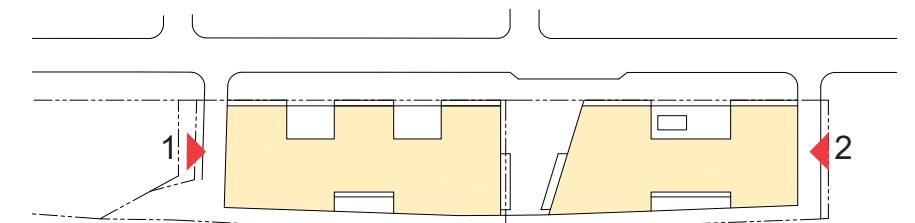


MATERIALS LEGEND

- 1.1 Masonry #1
- 1.2 Masonry #2
- 1.3 Masonry #3
- 2.1 Stucco #1
- 2.2 Stucco #2
- 2.3 Stucco #3
- 2.4 Metal Panel #1

- 3.1 Bronze Vinyl windows
- 3.2 Metal storefront system
- 3.3 Metal door system
- 3.4 Roll up door

- 4.1 Metal railing
- 4.2 Metal screen
- 4.3 Metal canopy
- 4.4 Wood finish metal accent
- 4.5 Corrugated metal panel
- 5.1 Signage

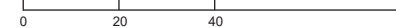


Architecture + Planning
888.456.5849
ktgy.com



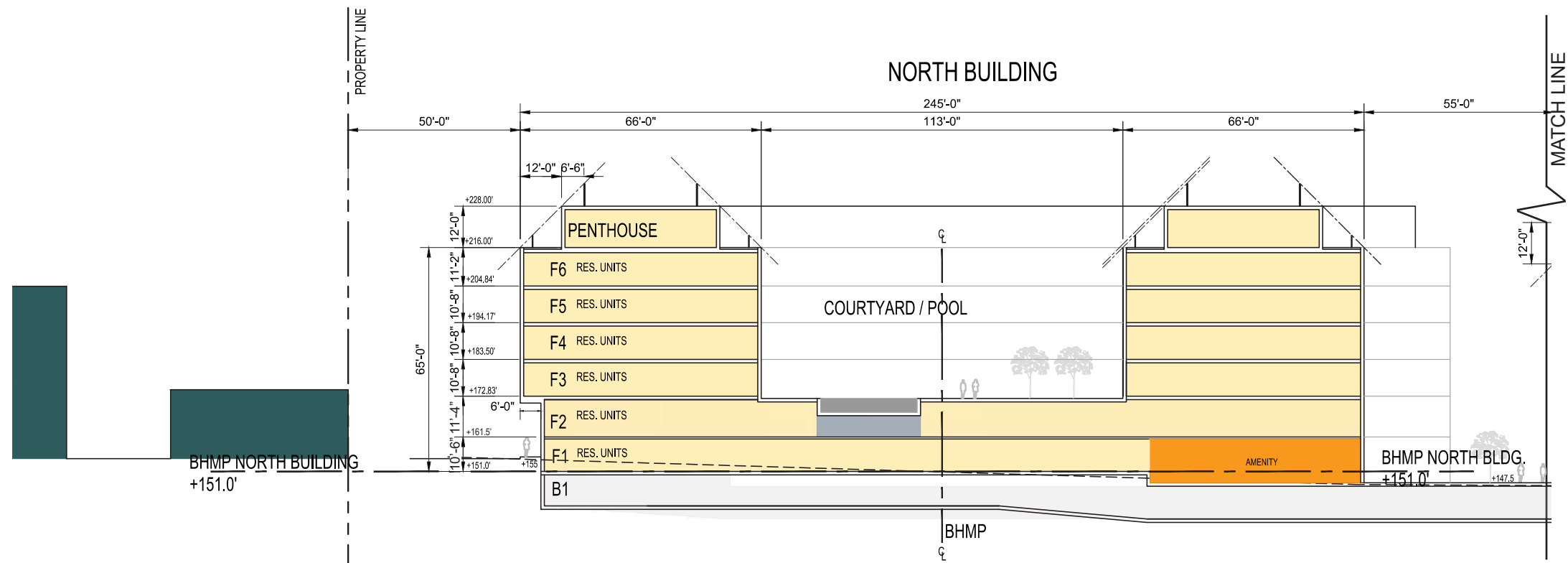
HANOVER 8TH STREET
WASHINGTON, DC # 2014-0339

CONSOLIDATED PUD SUBMISSION
APRIL 4, 2019

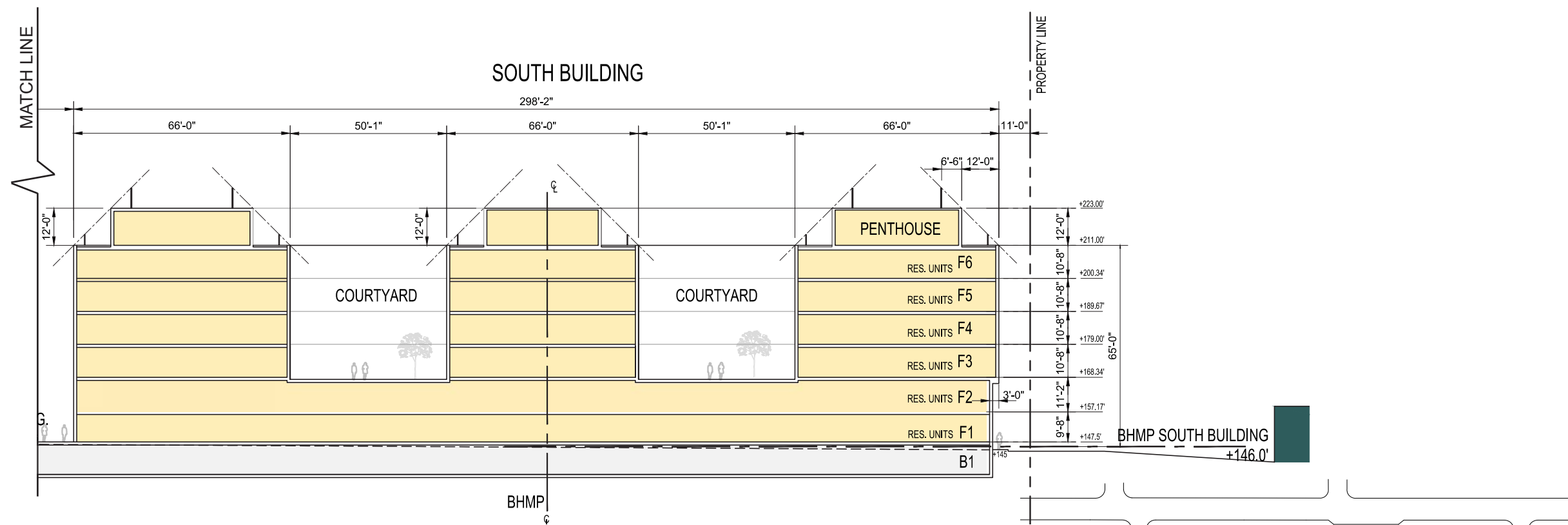


ELEVATIONS
NORTH / SOUTH

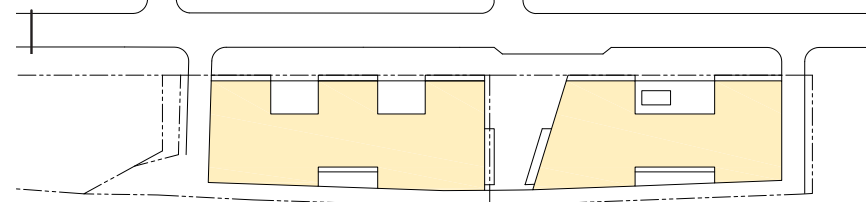
A27



LONGITUDINAL NORTH SECTION BUILDING B



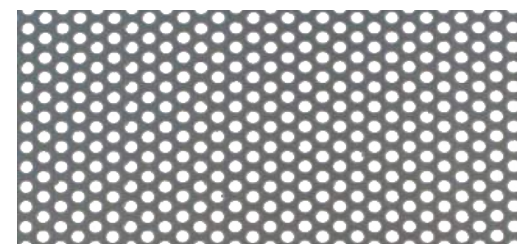
LONGITUDINAL SOUTH SECTION BUILDING A





MATERIALS LEGEND

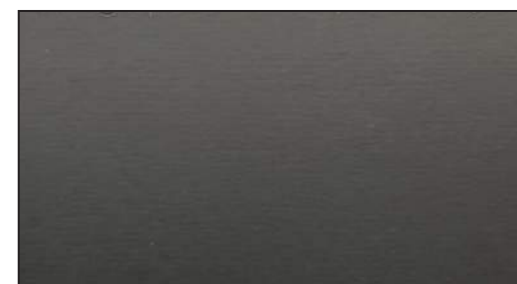
- 1.3 Masonry #3
- 2.4 Metal Panel #1
- 4.2 Metal Screen Perforated Metal
- 4.5 Corrugated Metal Panel



4.2 Metal Screen Perforated Metal



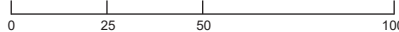
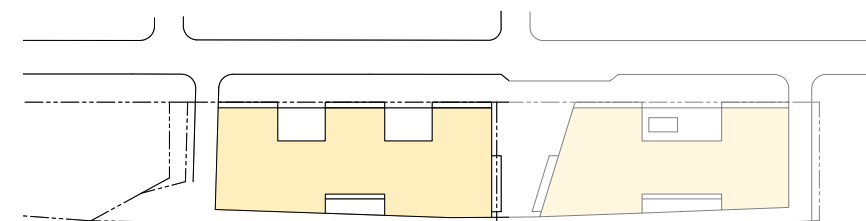
4.5 Corrugated metal panel



2.4 Metal Panel Color #1



1.3 Masonry #3



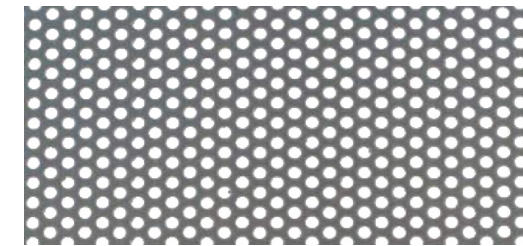
ENLARGED ELEVATION
SOUTH BUILDING

A30



MATERIALS LEGEND

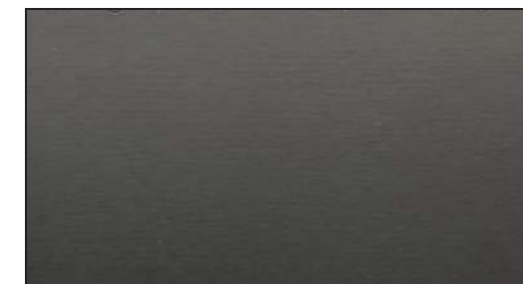
- 1.1 Masonry #1
- 2.4 Metal Panel #1
- 4.2 Metal Screen Perforated Metal
- 4.5 Corrugated Metal Panel



4.2 Metal Screen Perforated Metal



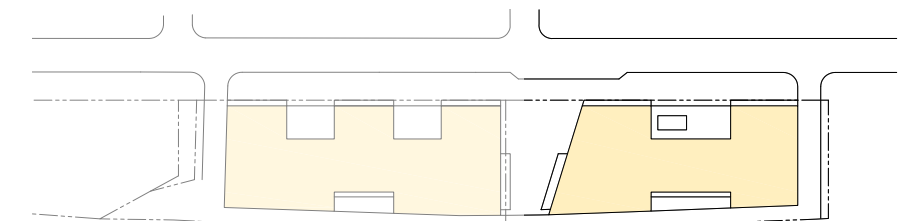
4.5 Corrugated metal panel



2.4 Metal Panel Color #1



1.1 Masonry #1



1.1 Masonry #1



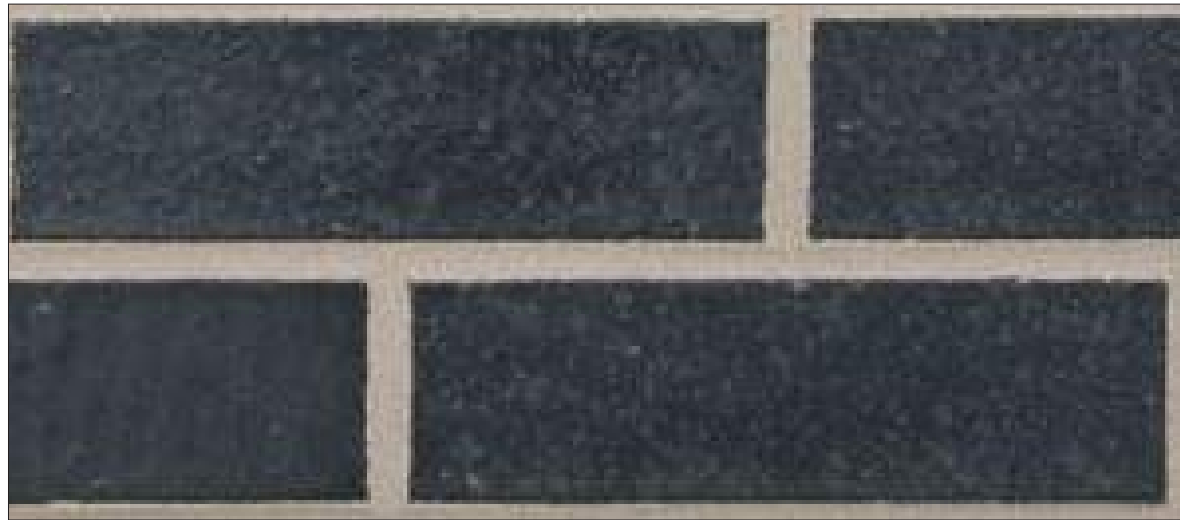
1.3 Masonry #3



4.4 Wood finish metal accent



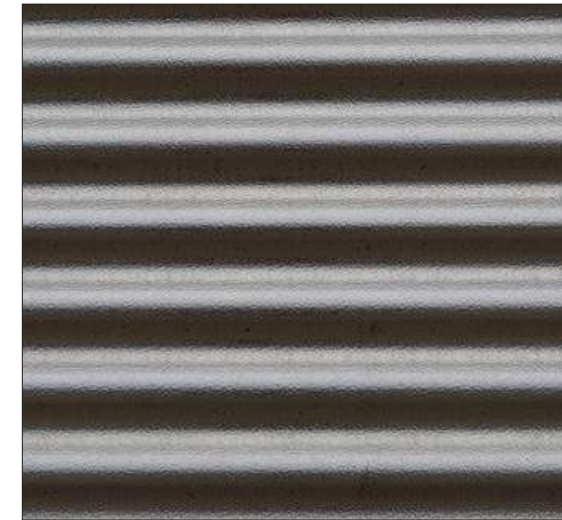
1.2 Masonry #2



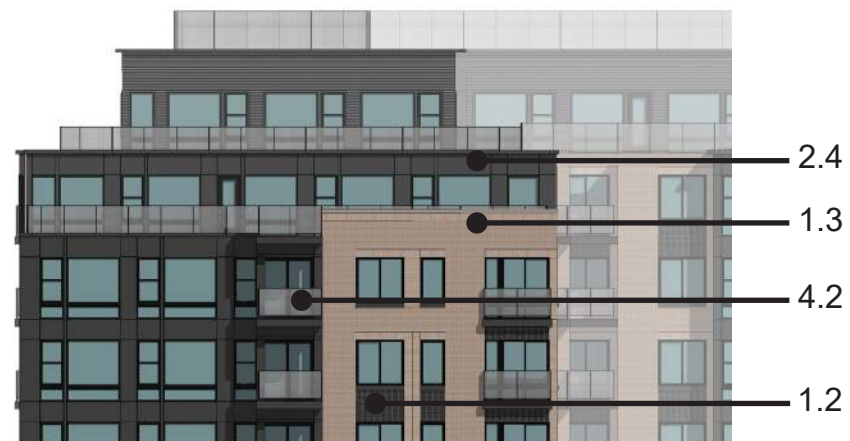
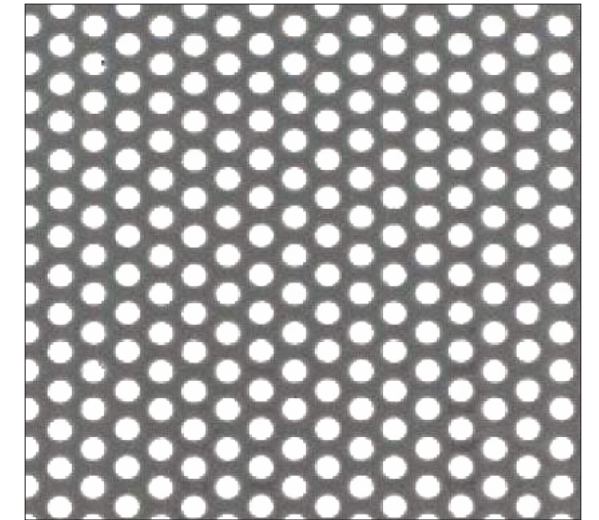
2.4 Metal panel #1



4.5 Corrugated metal panel



4.2 Perforated metal screen



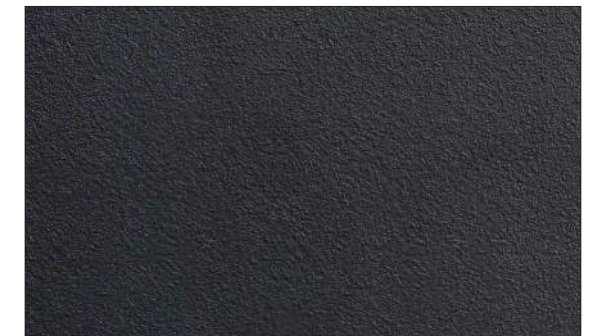
2.1 Stucco #1



2.2 Stucco #2



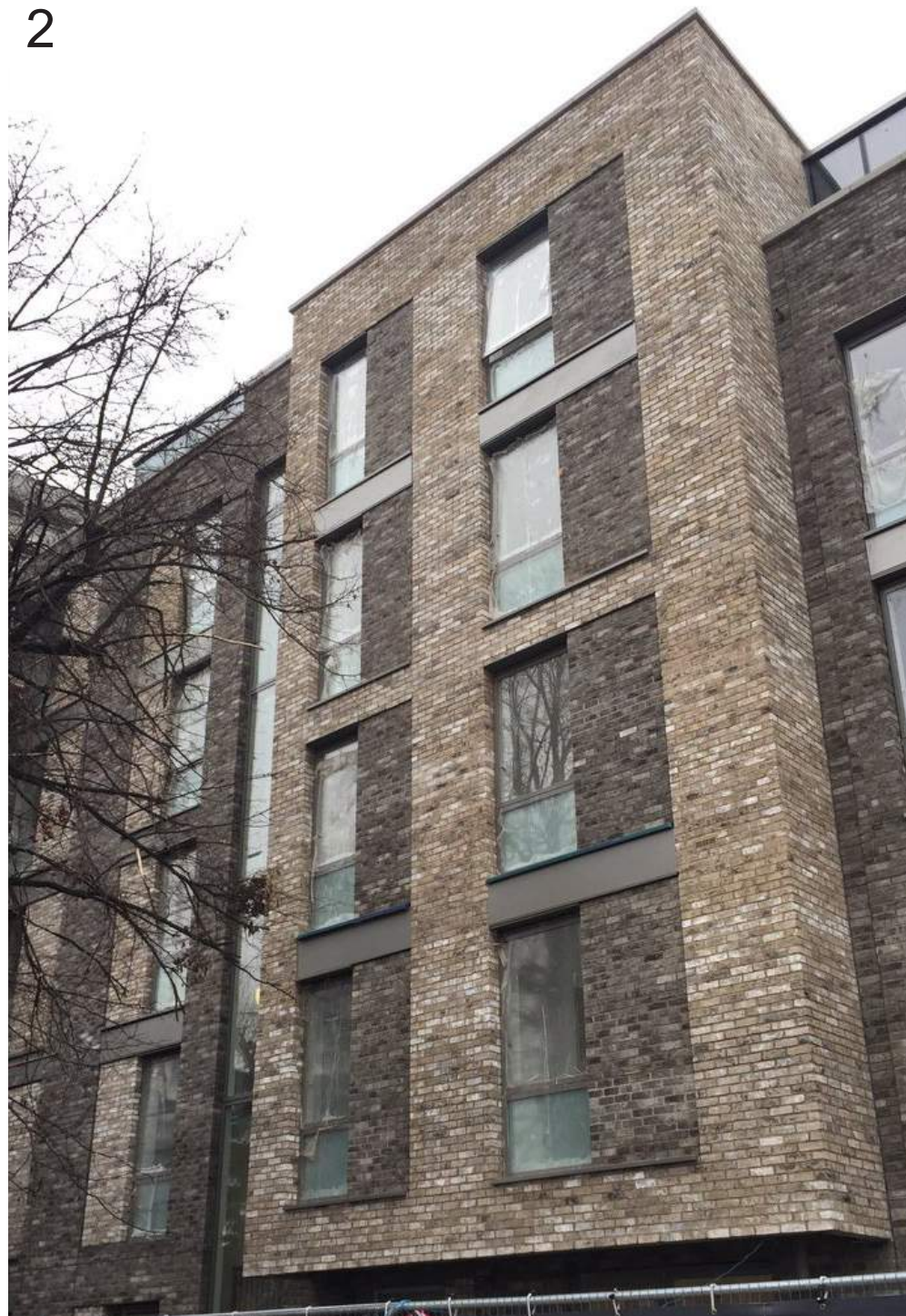
2.3 Stucco #3



1



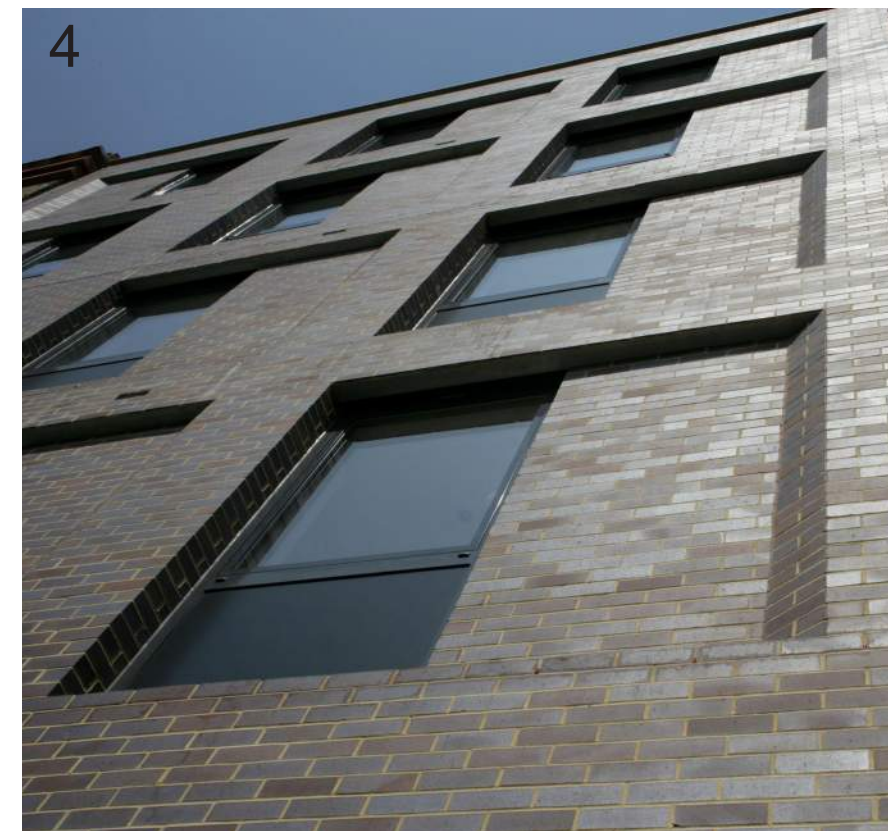
2

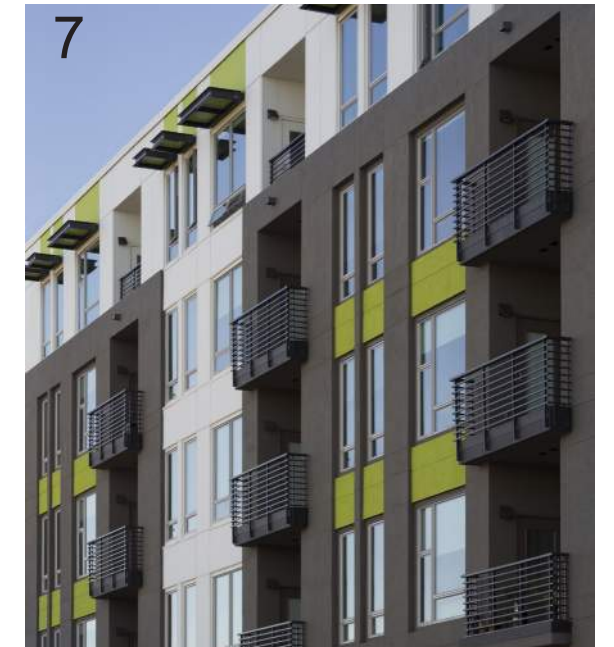
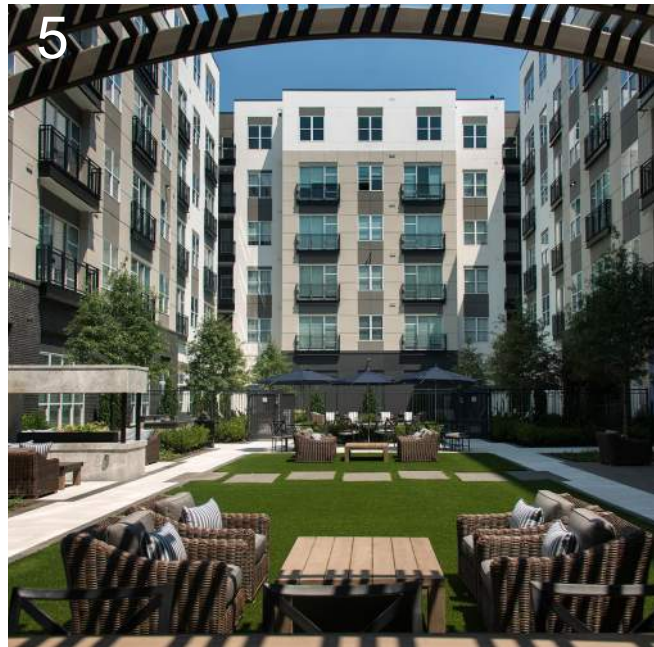


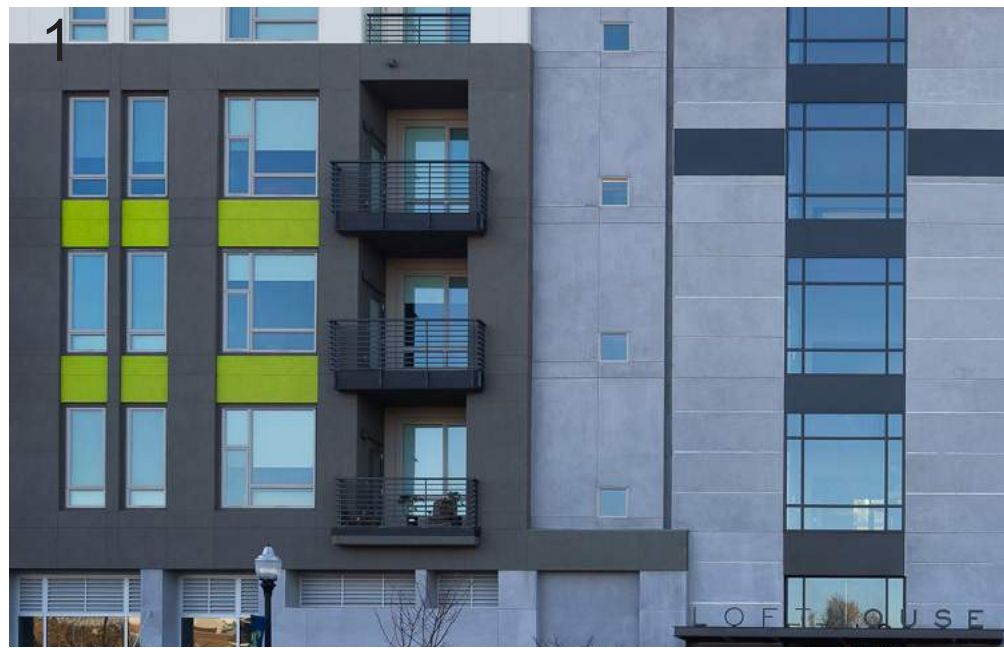
3



4







Adobe



Black



Bronze



Silver



Dove Gray



White



1 High Building ID



2 High Building ID

High Building ID



Main Canopy ID



NOTE: The exterior signage is preliminary and shown for illustrative purposes. The residential signage, including typface, color and message, may be modified so long as the signage is no larger than depicted in these plans and its location remains as reflected in the plans.



3 Main Canopy ID

